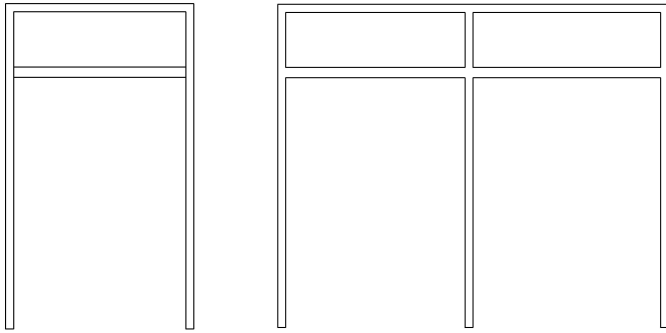


# TRANSOM FRAMES – GLAZED



## PRODUCT

Fire door transom frames for labeled glazing materials used with 1-3/4" (44 mm) thick fire doors swinging singly, in pairs, contra-swing or double egress configurations. Transoms with labeled wired glazing provide up to a 3/4 Hour fire rating. With some labeled laminated or non-wired glazing materials, transoms are available up to 1-1/2 hour fire protection rating. Refer to glazing manufacturers listings for additional information.

## MAXIMUM DOOR/TRANSOM OPENING

Drywall Partitions:

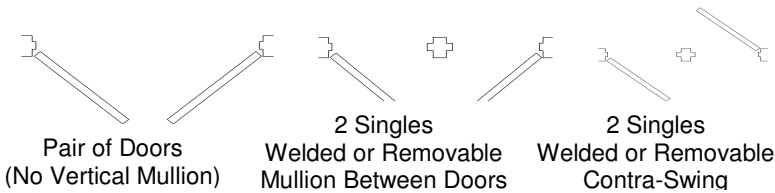
Singles: 4'0" x 11'4" (1219 x 3454 mm)

Pairs: 8'0" x 11'4" (2438 x 3454 mm)

All Other Partitions:

Singles: 4'0" x 12'0" (1219 x 3658 mm)

Pairs: 8'0" x 12'0" (2438 x 3658 mm)



## MAXIMUM LEAF SIZE

4'0" x 10'0" (1219 x 3048 mm)

## MULLIONS

Vertical mullions for between the door applications are optional and may be welded or removable. Doors shall not be hinged off removable mullions. Horizontal and vertical transom mullions must be welded.

## ANCHORS

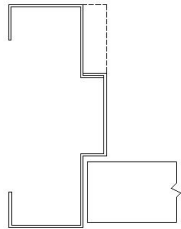
Anchors are available for new or existing masonry, poured concrete, structural steel, wood and steel stud partitions.

## SPECIFICATIONS

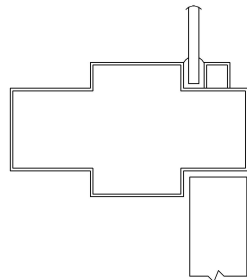
Transom frames shall be fabricated from hot rolled, cold rolled, galvanized, galvanized or stainless steel. Refer to "Profiles for Fire Rated Frame Products."

## PROFILES

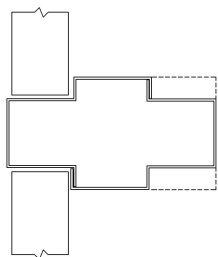
Single or double rabbet jambs, heads and mullions.



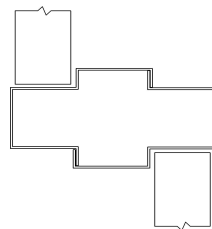
Jamb or Head



Transom Mullion



Welded or Removable Mullion Between Doors



Welded or Removable Contra-Swing Mullion



150 Division Drive  
Wilmington, NC 28401  
www.CustomMetalProductsNC.com

Revised 051607

Phone: 866-893-3338  
Fax: 866-963-1355  
Info@CustomMetalProducts.bz